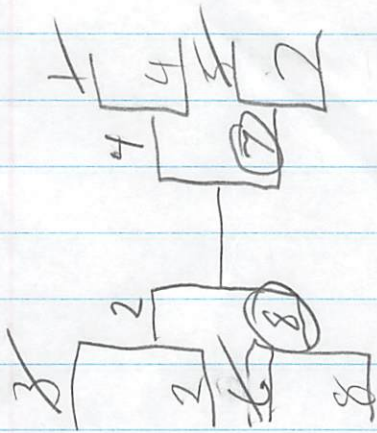


| | Single 3 | S/B | Great | Open |
|-----|----------|-----|--------------|------|
| 1 | Del Hawk | * | * | * |
| 2 | Kat | * | * | * |
| 3 | Colm | * | * | * |
| 4 | lanfi | * | * | * |
| 5 | Flash | * | * | * |
| 6 | Neon | — | — | * |
| 7 | Foxy | * | * | * |
| * 8 | Caleam | * | — | * |

8 10
 7 6
 1 1
 2 6
 4 8
 5 4
 3 1

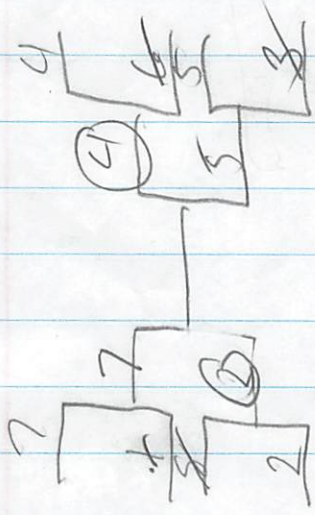
8 10
 4 8
 7 2 6
 Fox
 Kat
 lanfi
 Caleam

Single Short



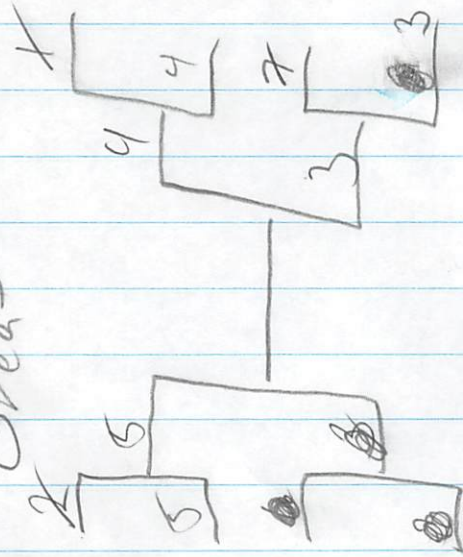
1, 8 5 3 1
 2, 7 3 1
 3, 2 1

Open



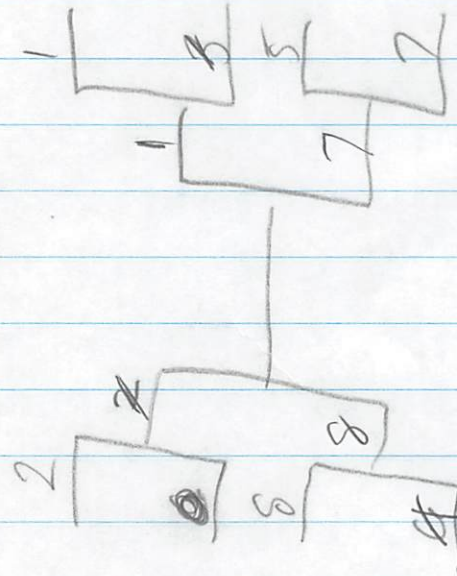
1, 2 5
 2, 4 3
 3, 5 1

Great



1, 4 5 3
 2, 5 3 1
 3, 3 1

S/B



1, 8 5 3
 2, 7 3 1
 3, 1 1

5 4 3 3
 4 3 3
 5 3 3

1 8 7 8
 1 7 8